

PRODUCT INFORMATION PACKET

Model No: 5KH36KN114
Catalog No: H169
1/6-1/18,1725/1140,DP,48Z,1/60/115
Fan and Blower



Regal and Marathon are trademarks of Regal Beloit Corporation or one of its affiliated companies.

©2018 Regal Beloit Corporation, All Rights Reserved. MC017097E



Product Information Packet: Model No: 5KH36KN114, Catalog No:H169 1/6-1/18,1725/1140,DP,48Z,1/60/115

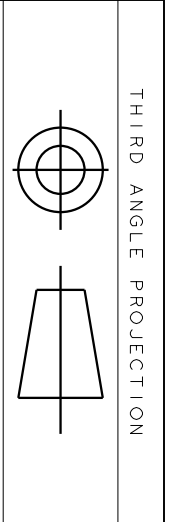
Nameplate Specifications

Output HP	1/6-1/18 Hp	Output KW	0.13 kW
Frequency	60 Hz	Voltage	115 V
Current	3.4,1.9 A	Speed	1725/1140 rpm
Service Factor	1.35	Phase	1
Efficiency	50.5 %	Duty	Continuous
Insulation Class	B	KVA Code	R
Frame	48Z	Enclosure	Drip Proof
Overload Protector	N/R	Ambient Temperature	40 °C
Drive End Bearing Size	6203	Opp Drive End Bearing Size	6203
UL	Recognized	CSA	Yes
CE	N		

Technical Specifications

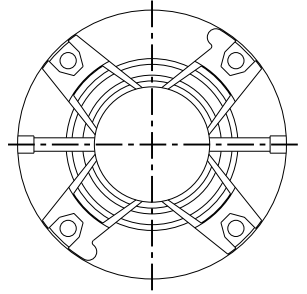
Electrical Type	Split Phase	Starting Method	SM
Poles	4	Rotation	Clockwise/Counterclockwise
Mounting	Resilient Base	Motor Orientation	ANY
Drive End Bearing	BALL	Opp Drive End Bearing	BALL
Frame Material	Rolled Steel	Overall Length	10.38 in
Frame Length	6.22 in	Shaft Diameter	0.5 in
Shaft Extension	1.88 in	Thru-bolts Extension	0
Outline Drawing	52A101908P5	Connection Diagram	52A106478AA

This is an uncontrolled document once printed or downloaded and is subject to change without notice. Date Created: 10/08/2018

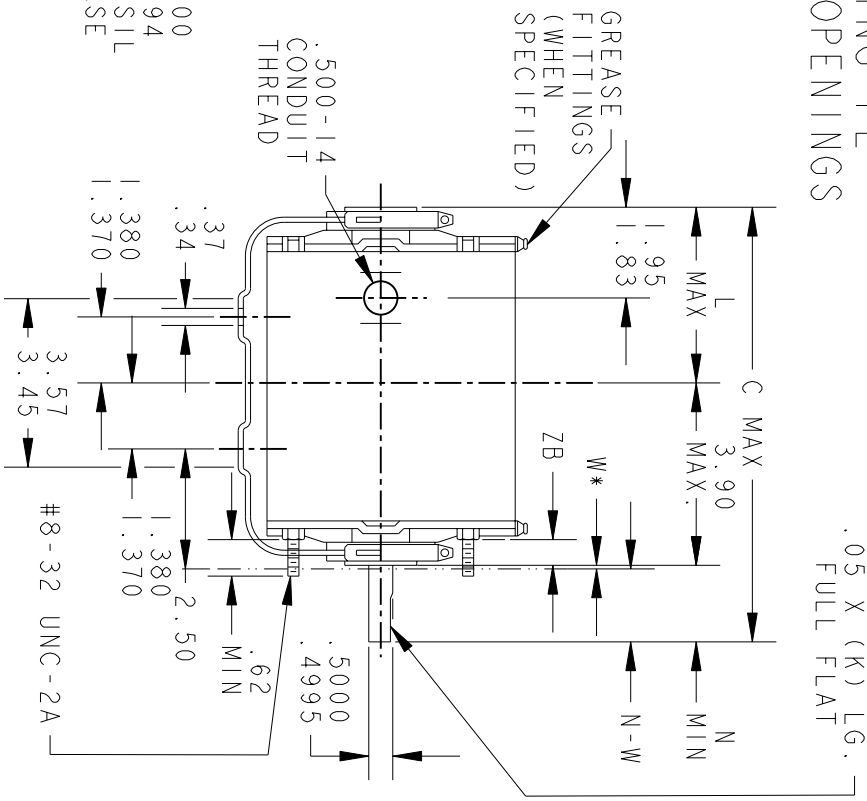
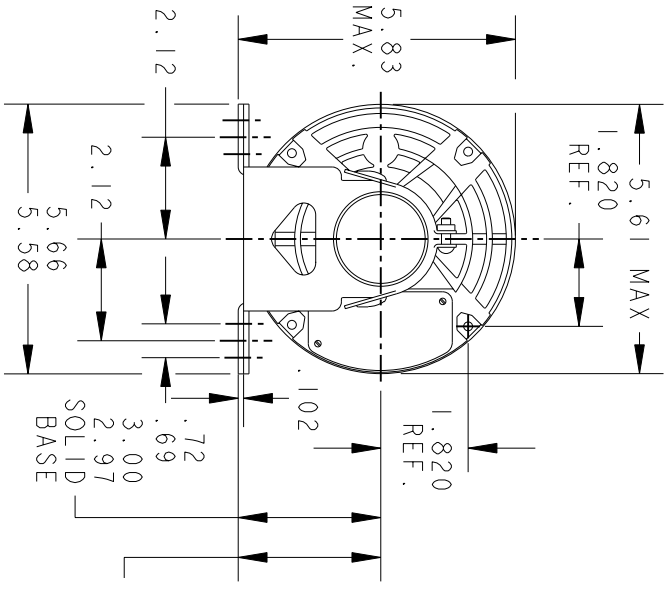


REVISIONS

REV.	DESCRIPTION	DATE	APPROVED
8	CHG TO RBC FORMAT PER IS 05-1777	12/15/05	RAJKUMAR



VIEW SHOWING PE VENTILATION OPENINGS



*W IS A CLEARANCE DUE TO VARIATION IN PARTS & ASSEMBLY.

PT	TYPE	GE SIZE	NEMA FR	C	K	L	N	N-W	ZB
6	KH	37	48Z	10.78	1.54	5.05	1.88	2.01/1.79	.55/.52
5	KH	36	48Z	10.38	1.54	4.65	1.88	2.01/1.79	.55/.52
4	KH	33	48Z	9.94	1.91	3.84	2.25	2.38/2.16	.55/.52
3	KH	35	48Z	9.95	1.54	4.22	1.88	2.01/1.79	.55/.52
2	KH	33	48Z	9.57	1.54	3.84	1.88	2.01/1.79	.55/.52
1	KH	32	48Z	9.32	1.54	3.59	1.88	2.01/1.79	.55/.52



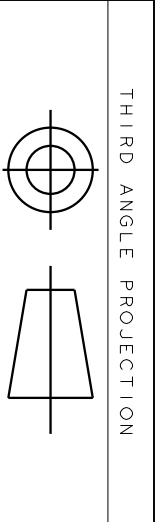
REGAL-BELOTT CORPORATION

TITLE OUTLINE

FORM N- GENERAL PURPOSE MOTOR- DRIP PROOF- SOLID OR RESIL BASE- BALL OR SLEEVE BEARING

FOR ADDITIONAL INFO REFER TO:	MODEL	DETAIL	CHECKED	ENGRG	MFG	QUALITY	ISSUED	SOLID MODEL: 52A101908
APPLIED PRACTICES	DETAIL	JPk	01/15/76	MDP	07/10/96	MDP	07/10/96	
DIMENSIONS ARE IN INCHES	ISSUED	MDP	07/10/96					
MATERIAL	SOLID MODEL: 52A101908							

SCALE: 0.250	REF. No.:	SHEET 1 of 1
SIZE: DRAWING A		
REV 8		



THIRD ANGLE PROJECTION

REV.	DESCRIPTION	DATE	APPROVED
5	UPDATED TO RBC FORMAT	01/09/06	MAM

EITHER ROTATION
 SINGLE VOLTAGE
 TYPE KC, KCR, OR KH
 2 SPEED
 POLE CHANGING

T1 OR BLUE

T2 OR WHITE

T8 OR RED

J10 OR RED

MAIN (HI)

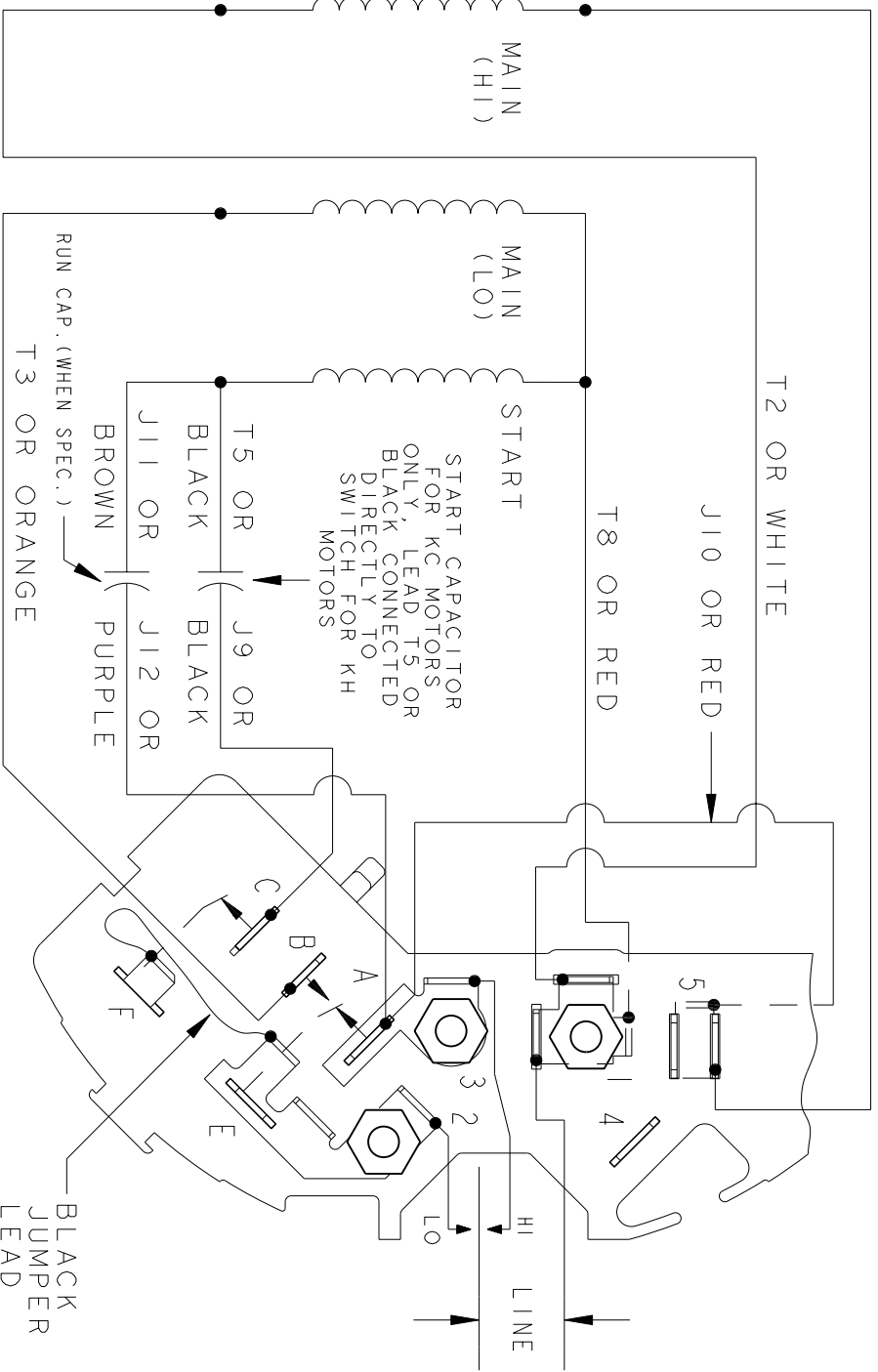
MAIN (LO)

START

START CAPACITOR
 FOR KC MOTORS
 ONLY, LEAD T5 OR
 BLACK CONNECTED
 DIRECTLY TO
 SWITCH FOR KH
 MOTORS

T5 OR BLACK
 J11 OR BROWN
 J9 OR BLACK
 J12 OR PURPLE
 RUN CAP. (WHEN SPEC.)
 T3 OR ORANGE

BLACK
 JUMPER
 LEAD



NOTE #1 - TO REVERSE ROTATION INTERCHANGE BLUE (T1) AND WHITE (T2) LEADS.
 NOTE #2 - WHEN MORE THAN ONE CAPACITOR IS USED CONNECT IN PARALLEL.

SWITCH (D) - 115D9558BA

CONNECTION LABEL - 52X332073

REF. DIAG. - 121A865

SIGNATURES	DATE
MODEL M.D.P.	12/14/87
DETAIL	
CHECKED	
ENGRG	
MFG	
QUALITY	
ISSUED M.D.P.	12/14/87
MATERIAL	SOLID MODEL: 52A106478AA



REGAL-BELOTT CORPORATION

TITLE CONNECTION DIAGRAM

FMF: 5KH36KN114G

52A106478AA

SIZE A	DRAWING	SCALE: 1.000	REF. No.:	SHEET 1 of 1
--------	---------	--------------	-----------	--------------